



Important Notice





**From April 22, 2019,
Measures against the illegal
introduction of plants will be tightened.**


- ◆ In the event that undeclared seeds or fruits etc. are discovered in your luggage, you will be subject to penalties.
- ◆ Information from your passport or boarding pass will be recorded as part of the import inspection, so inspections may take a little time.



Under the Plant Protection Act,
Bringing in plants without receiving import inspections
will be subject to up to 3 years in prison or a fine of up to
1 million yen.

Contacts

 Yokohama Plant Protection Station 045-211-7152
 Nagoya Plant Protection Station 052-651-0112
 Kobe Plant Protection Station 078-331-2386

 Moji Plant Protection Station 093-321-2601
 Naha Plant Protection Office 098-868-2850



Plant Quarantine Notice



Phytosanitary certificates must be submitted for all plants



When bringing plants* into Japan, it is legally required to submit Phytosanitary certificate issued by the government of exporting country and to take import inspection based on the Plant Protection Act.

* Fruits, vegetables, cereals, cut flowers, seeds, seedlings, plant products (ex. dry flowers) etc.

See the other side for more detailed information of import prohibition and other requirements (Phytosanitary certificates submission and import inspection).



If Phytosanitary certificates are not presented, the plants will be disposed (Plant Protection Act).

Legal penalties may apply to violation cases such as imports without phytosanitary certificates or without plant import inspection: you will be caught in jail for max. three years or charged with max. one million yens.

On alert for plant pests entry



Plants subject to import prohibition (not exhaustive)

- Most fruits and fruit vegetables (ex. Citrus fruits and Mangoes) from countries and regions in which Mediterranean fruit flies and/or Oriental fruit flies are present.
- Apples, cherries, and other fruits from countries and regions in which Codling moths are present.

* Many plants cannot be imported from countries and regions in which the seriously damaging pests are present. For more info, contact any plant protection station listed below.



Mediterranean fruit fly



Oriental fruit fly



Codling moth

◆ Import inspections required but Phytosanitary certificates not required

- Dried plants of turmeric and the genera *Eucommia*;
- Dried seeds of almond, cashew, coconut, pepper, pistachio, Persian walnut and macadamia nut (except those for cultivation).

◆ Phytosanitary certificates and Import inspections are not required

- Processed goods such as lumber
- Processed tea leaves
- Plants immersed in alcohol, acetic acid, sugar etc.

Contacts

- Yokohama Plant Protection Station +81-45-211-7153
- Nagoya Plant Protection Station +81-52-651-0112
- Kobe Plant Protection Station +81-78-331-2386
- Moji Plant Protection Station +81-93-321-2601
- Naha Plant Protection Station +81-98-868-2850

Other Prohibitions

× Prohibition

Items prohibited from all countries and regions are "Soil", "Plants attached with soil", "Quarantine pests which are injurious to plants and plant products", "Rice straw or rice husks (excluding those from the Korean Peninsula and Taiwan)".

Prohibited Items (Example)

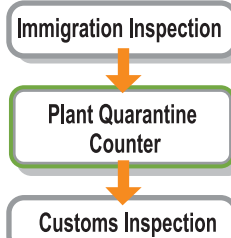


It is prohibited to bring rice straw products into Japan from countries with established rice straw import prohibitions.

※ Please note that some craft products (triangular pillows made of rice straw, etc.) may contain plant matter as core material.

Import Inspection

All plants and plant products must undergo inspections to ensure they are free from pests and diseases where or not they are subject to prohibition. Prior to the inspections, the Phytosanitary Certificate issued by the government of exporting country must be submitted.



- If Phytosanitary certificates are not presented, the plants will be disposed (Plant Protection Act).
- Fines may apply to plants and plant products brought into Japan without undergoing inspection under Japan's Plant Quarantine Act.
- Items purchased at duty-free shops or small quantities of souvenirs are also required to undergo inspection. Be sure to submit such products for inspection at the Plant Quarantine counter before moving on to customs inspection.

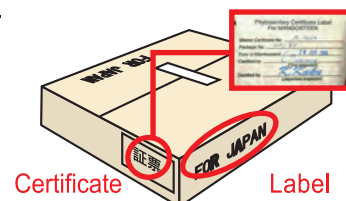
⚠ Particular conductions and restrictions

- ① Other plants and plant materials may be also subject to prohibition when they come via the countries and regions from which the import of such items is prohibited.
- ② Special conditions may be required such as growing site inspection in the exporting country for the following items :seeds for cultivation, roots of ginger, turmeric and other plants, as well as gardening materials.
- ③ Bulbs , fruit seedlings, potatoes, sweet potatoes, and sugar cane are subject to post-entry quarantine cultivation for a fix period (approximately one year) for virus inspections. Narcissus bulbs are subject to hot water immersion treatment prior to import.

Conditional import of items subject to prohibition

Some of the prohibited fruits can be imported under appropriate and agreed conditions, for example, papaya from Hawaii, mangoes from Thailand and mangoes from Australia by carrying on luggage.

Before purchasing, make sure that the products are packaged specifically for Japan, and labeled "FOR JAPAN" with a quarantine certificate.



Import of live insects



《Import Prohibitions》

A number of foreign insects (including flower beetles, phasmid, and butterflies) carry the potential to cause severe damage to Japanese agriculture and forestry. Such live insects cannot be brought into Japan based on the provisions of the Plant Quarantine Act, which designates these as harmful pests that must be quarantined. When bringing insects into Japan from overseas, please contact a Plant Protection Station before traveling.

Members of the scarab beetle family, such as the stag beetle and the rhinoceros beetle are further subject to import restrictions stipulated in the Invasive Alien Species Act and require submission of certificate of species when importing into Japan. Please consult the Ministry of the Environment's Invasive Alien Species Act website for further details and procedures regarding the import of these species into Japan.

- ◆ Invasive Alien Species Act website
<http://www.env.go.jp/en/nature/as.html>
- ◆ Ministry of the Environment, Nature Conservation Bureau, Wildlife Division, Office for Alien Species Management
TEL:03-3581-3351

Other Applicable Laws

○ Regulations

Washington Convention (the Convention on International Trade in Endangered Species of Wild Fauna and Flora). The Washington Convention prohibits or restricts international trading in plants at risk of extinction, including orchids, cacti, and cycads. For further information regarding the Washington Convention, please contact the following telephone number:

- Ministry of Economy, Trade and Industry, Trade and Economic Cooperation Bureau, Trade Control Department, Office of Trade Licensing for Wild Animal and Plants
TEL: 03-3501-1723, FAX: 03-3501-0997
- CITES Secretariat
<http://www.cites.org/>

Major Plant Protection Stations

■ Yokohama Plant Protection Station-----045-211-7153

Sapporo Sub-Station011-852-1809
Shinchitose Airport Branch0123-24-6154
Shiogama Sub-Station022-362-6916
Sendai Airport Detached office022-383-4585
Narita Sub-Station PTB10476-32-6694
PTB2・30476-34-2352
Tokyo Sub-Station.....03-3599-1137
Haneda Airport Sub-Station03-5757-9790
Niigata Sub-Station.....025-244-4401

■ Nagoya Plant Protection Station 052-651-0112

Fushiki-Toyama Sub-Station0766-44-0954
Shimizu Sub-Station054-352-3775
Chubu Airport Sub-Station0569-38-8433

■ Kobe Plant Protection Station----- 078-331-2386

Osaka Sub-Station.....06-6571-0801
Kansai Airport Sub-Station.....072-455-1936
Hiroshima Sub-Station082-251-9593
Hiroshima Airport Detached office..... 0848-86-8261
Sakaide Sub-Station0877-46-4108

■ Moji Plant Protection Station----- 093-321-2601

Fukuoka Sub-Station092-291-2504
Fukuoka Airport Branch092-477-7575
Kagoshima Sub-Station099-222-1046
Naze Sub-Station.....0997-52-0459

■ Naha Plant Protection Station 098-868-2850

Naha Airport Branch098-857-0054

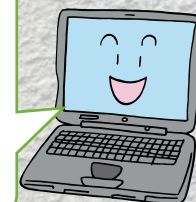
◆ Taking plant out of Japan.....◆

Different countries have different measures in place concerning prohibitions on imports, restrictions, and phytosanitary treatments for the same plant material. For further details, please contact your nearest Plant Protection Station.

808102

Ministry of Agriculture,
Forestry and Fisheries of Japan
Plant Protection Station

[http://www.maff.
go.jp/pps/](http://www.maff.go.jp/pps/)

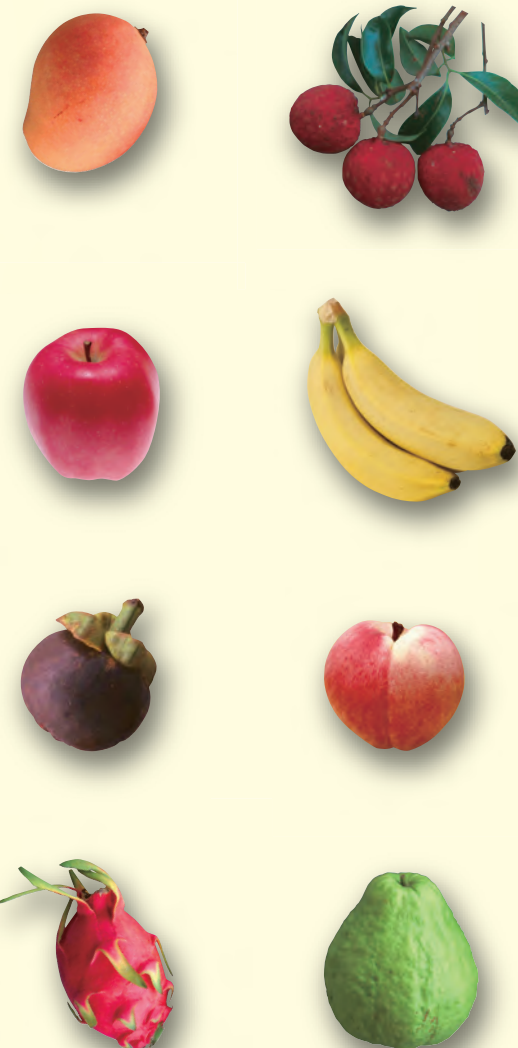


Please consult the website
for further information!

Plant Quarantine Notice

Certain plants and plant products cannot be brought into Japan

Ministry of Agriculture, Forestry and Fisheries of Japan
Plant Protection Station



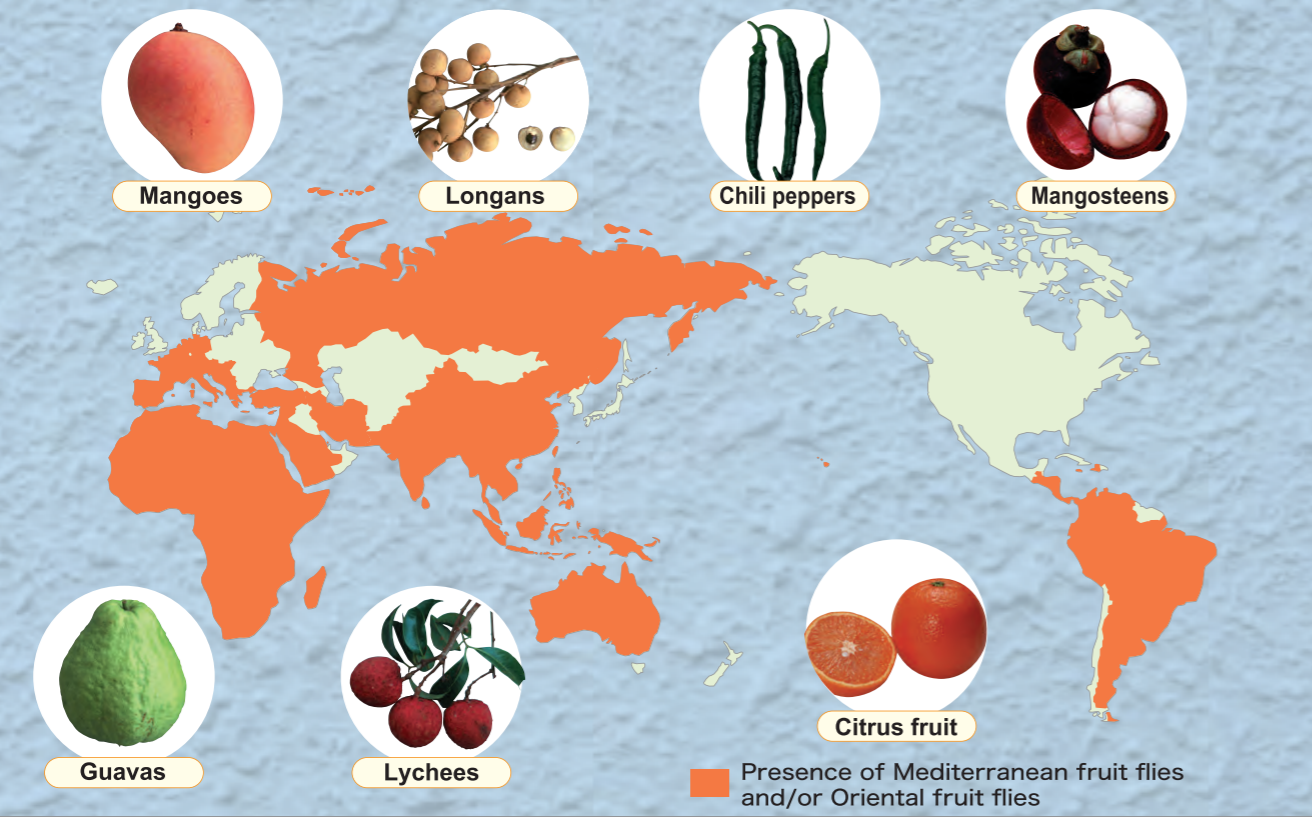
MAFF

英語版

⊗ Plants and regions subject to import prohibitions

Not exhaustively listed. For details, inquire with Japanese plant protection station or visit its website. <http://www.maff.go.jp/pps/>

◆ Most fruits and vegetables cannot be brought into Japan from countries and regions in which Mediterranean fruit flies and/or Oriental fruit flies are present.



◆ Apples, cherries, and other fruits as well as walnuts with the shell cannot be brought into Japan from the countries and regions in which Codling moths are present.



◆ The following items can be brought into Japan when the Phytosanitary Certificate issued by the government of exporting country is submitted and if the consequent inspection verifies the absence of pests and diseases.

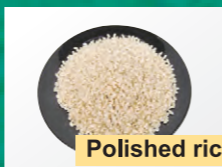
[Attention] If Phytosanitary certificates are not presented, the plants will be disposed (Plant Protection Act).



Pineapples



Cut orchids



Polished rice

◆ The following items are also prohibited from being brought into Japan.

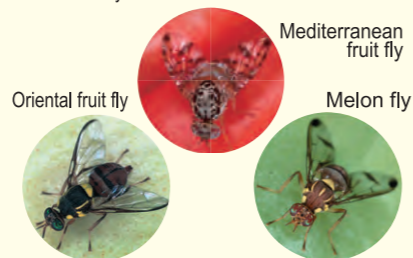
- ◆ "Sweet potatoes (including stems and leaves)" from Asia, the United States, Hawaii, the Caribbean, Australia, Africa, etc.
- ◆ "Seedlings such as citrus or anthurium seedlings" from the United States and Hawaii.
- ◆ "Straw" from Europe, the United States, Canada, New Zealand, etc.
- ◆ "Seedlings or cut flowers from apples, pears, hawthorn, and pyracantha" from the United States, Canada, Mexico, Europe, New Zealand, Israel, Iran, etc.

● Major plant pests and diseases on alert

There is a large variety of foreign pests and diseases that cause severe damage to Japanese agriculture and forestry. In order to prevent the entry of these pests into Japan, all plant materials being brought into is subject to quarantine inspections. Many plants and plant products are prohibited or restricted by law to be brought into Japan from countries or regions in which the seriously damaging pests are present. Many other pests and diseases are also of quarantine concerns.

● Fruit fly

Fruit fly causes considerable damage to fruits and vegetables. Larvae infest the fruit and make it unsuitable for harvesting. The fruit flies are widely distributed in the world.



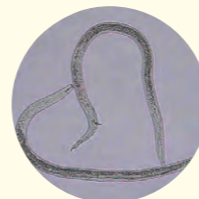
● Codling moth

Codling moth has a considerable impact to apples and pears, etc. Adult moths lay eggs on unripe fruits or leaves, and the larvae born from them infest the fruits.



● Citrus burrowing nematode

This worm causes considerable damage to a variety of plants, and especially affects the Rutaceae family fruit trees. Plants that become a host to this pest will eventually die.

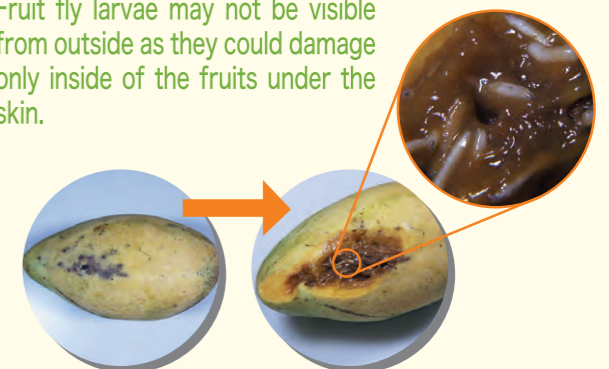


● Potato wart

The disease causes serious harm to potato crops. It leads to the development of lumpy warts on the potato which will eventually rot.



Fruit fly larvae may not be visible from outside as they could damage only inside of the fruits under the skin.



Plant Quarantine Inspections of Japan

Plant Protection Stations perform import inspections for plants to prevent the entry of harmful pests from overseas into Japan, and export inspections based on plant quarantine requirements specified by destination countries in order to prevent similar problems abroad.

Plant quarantine inspections are required when bringing plants into Japan from abroad or taking plants out of Japan.

Import Procedures when Bringing Plants into Japan from Another Country (Plants Transported in Personal Baggage)

Import inspections are required for all plants—even plants purchased at duty-free shops, small-sized plants and so forth—to ensure that no harmful pests are entering the country along with them. Complete an inspection at the Plant Quarantine Counter before going through customs inspections.

Immigration Inspection



Imported Plant Inspection
(Plant Quarantine Counter)



Please submit any inspection certificates issued by the exporting country (known as "phytosanitary certificates" and issued in tag form) to the plant quarantine officer at the Plant Quarantine Counter.

If phytosanitary certificates are not presented, the plants will be disposed. Legal penalties may apply to violation cases such as imports without phytosanitary certificates or without plant import inspection.

Examples of Items Requiring Import Inspections:

- Seedlings/saplings, bulbs, seeds
- Cut flowers
- Fruits, vegetables
- Grains / cereal grass, beans
- Wood materials / lumber
- Items used as ingredients for making spices, herbal medicines, etc.

Items Whose Import is Prohibited in Japan

- Soil
- Plants attached with soil
- Quarantine pests which are injurious to plants and plant products
- Rice straw or rice husks

In addition, certain fruits and vegetables may be banned (import-prohibited items) depending on the country/region where they were produced or the country/region from which they were exported.

Banned fruits and vegetable can be confirmed (in English) via the Database for Importing Conditions.



Database for Importing Conditions (English)

Customs Inspection



Export Procedures when Taking Plants from Japan to Another Country (Plants Transported in Personal Baggage)

When taking fruits, vegetables and other such plants and items from Japan into another country/region, you must adhere to the regulations (quarantine requirements) of the destination country/region. Depending on the plant type, the destination (importing) country/region may prohibit the import of certain plants, require export inspections by a Plant Protection Station, or have other such regulations.

Confirmation of Export Destination Country's Quarantine Regulations



Export Requirement Quick Reference Chart
for Personally Transported Items (English)

For information on items not included in the quick reference charts, destination country quarantine requirements, or other such details, please contact a Japanese Plant Protection Station, or the destination country's plant quarantine authority or embassy in Japan.



Plant Export Inspection

If the destination country's quarantine requirements include export inspection in Japan, complete any required export inspection at a Plant Protection Station or a major airport's Plant Quarantine Counter before starting boarding procedures. No fee is required for plant export inspections, issuance of phytosanitary certificates, etc.

Airports with Export Quarantine Inspection Counters

- New Chitose Airport: International Passenger Terminal Bld. (3rd Floor), CIQ exhibition room
- Haneda Airport: International Passenger Terminal (3rd Floor), near the Airline Check-in Counter L
- Narita Airport: Passenger Terminal 1 (1st Floor) South Wing, Passenger Terminal 2 (1st Floor) Zone-A
- Chubu International Airport: Passenger Terminal (3rd Floor), near the International Airline Check-in Counter A
- Kansai Airport: Terminal 1 Bld. (4th Floor North Side), near the North Departures Gate
- Fukuoka Airport: International Terminal Bld. (3rd Floor Southside), near the Airline Check-in Counter M

Export inspections can be carried out on or prior to the day of shipment/transport from Japan at one of the Plant Protection Stations. We request that persons requesting inspections make an appointment in advance. If you plan to carry the item(s) with you personally, it may take longer to complete inspections at the Plant Protection Station, so please arrive early enough to ensure that you have enough time to make your flight/boat out of Japan afterward.

Boarding Procedures

Customs Inspection

Emigration (Departure) Inspection



Inquiries regarding export inspections (English)



◆ Taking Plant and Plant Products out of Japan..... ◆

Every country has specific requirements including prohibitions on imports, restrictions, and disinfection treatments for importation of plant and plant products.

For further details, please contact the website below.

Ministry of Agriculture,
Forestry and Fisheries of Japan
Plant Protection Station

[http://www.maff.
go.jp/pps/](http://www.maff.go.jp/pps/)

Information is also
available online.



For travellers taking agricultural products out of Japan

Ministry of Agriculture, Forestry and Fisheries of Japan
Plant Protection Station

Contact Details

■ Yokohama Plant Protection Station

Shin-Chitose Airport Branch Tel. 0123-24-6154
Narita Sub-Station PTB1 Tel. 0476-32-6694
PTB2 & PTB3 Tel. 0476-34-2352
Haneda Airport Sub-Station Tel. 03-5757-9790

■ Nagoya Plant Protection Station

Chubu Airport Sub-Station Tel. 0569-38-8433

■ Kobe Plant Protection Station

Kansai Airport Sub-Station Tel. 072-455-1936

■ Moji Plant Protection Station

Fukuoka Airport Branch Tel. 092-477-7575

■ Naha Plant Protection Station

Naha Airport Branch Tel. 098-857-0054

Further contact details are available on our website.

Export Quarantine Counter

■ New Chitose Airport

International Passenger Terminal Bld. 3F
CIQ Exhibition Room

■ Narita International Airport

Passenger Terminal Bld. 1 (4th Floor)
North Wing
Passenger Terminal Bld. 2 (3rd Floor)
North Group Counter 32

■ Haneda Airport

International Passenger Terminal Bld
(3rd Floor), near the Airline Check-in,
Counter L

■ Chubu Airport

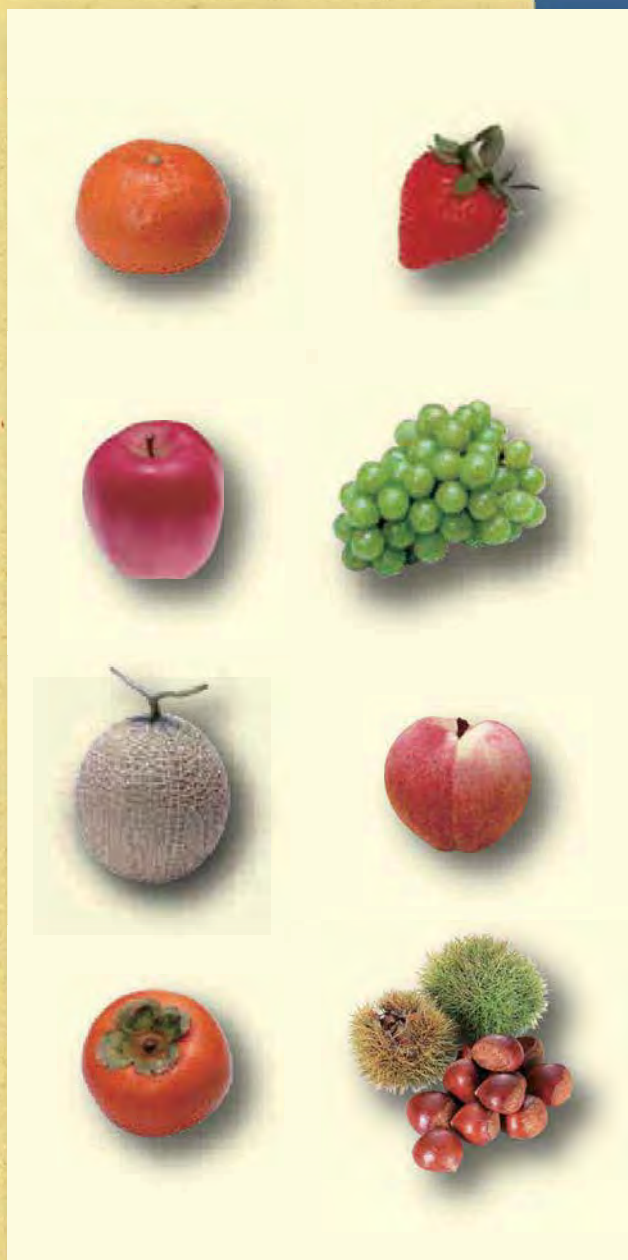
Passenger Terminal Bld.(3rd Floor),
near the International Airline Check-in Counter A

■ Kansai International Airport

Passenger Terminal Bld.
(4th Floor North Side), near the North Departures Gate

■ Fukuoka Airport

Passenger Terminal Bld. (3rd Floor Southside), near the Airline
Check-in Counter M



MAFF



Japan.
"Oishii" to the world.
Washoku

英語版
201810

